

# Providence Pavilion

1025 Veterans Memorial Highway



## PUBLIX ANCHOR CLOSE TO I-285

Mableton, GA - Cobb County



### PROPERTY HIGHLIGHTS

- **CO-TENANTS:** Publix, Edward Jones, Subway, Walgreens,
- **GLA:** 95,206 SF
- **AVAILABLE:** 1,400 SF - 3,750 SF inline space; 1,462 SF outparcel space
- **Accessible via traffic signal**
- **Traffic Counts\*\***  
- Veterans Memorial - 24,740 AADT

For More Information Call:

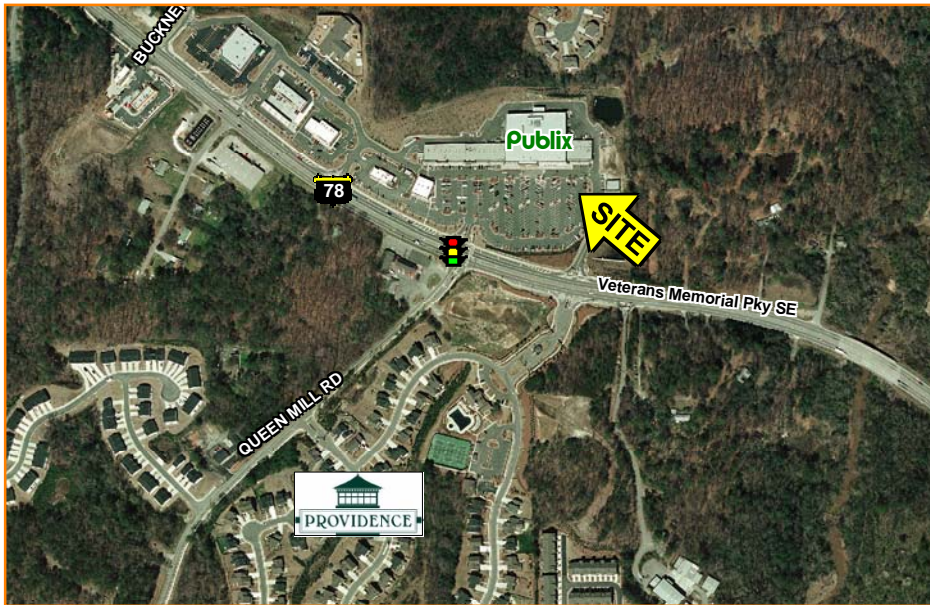
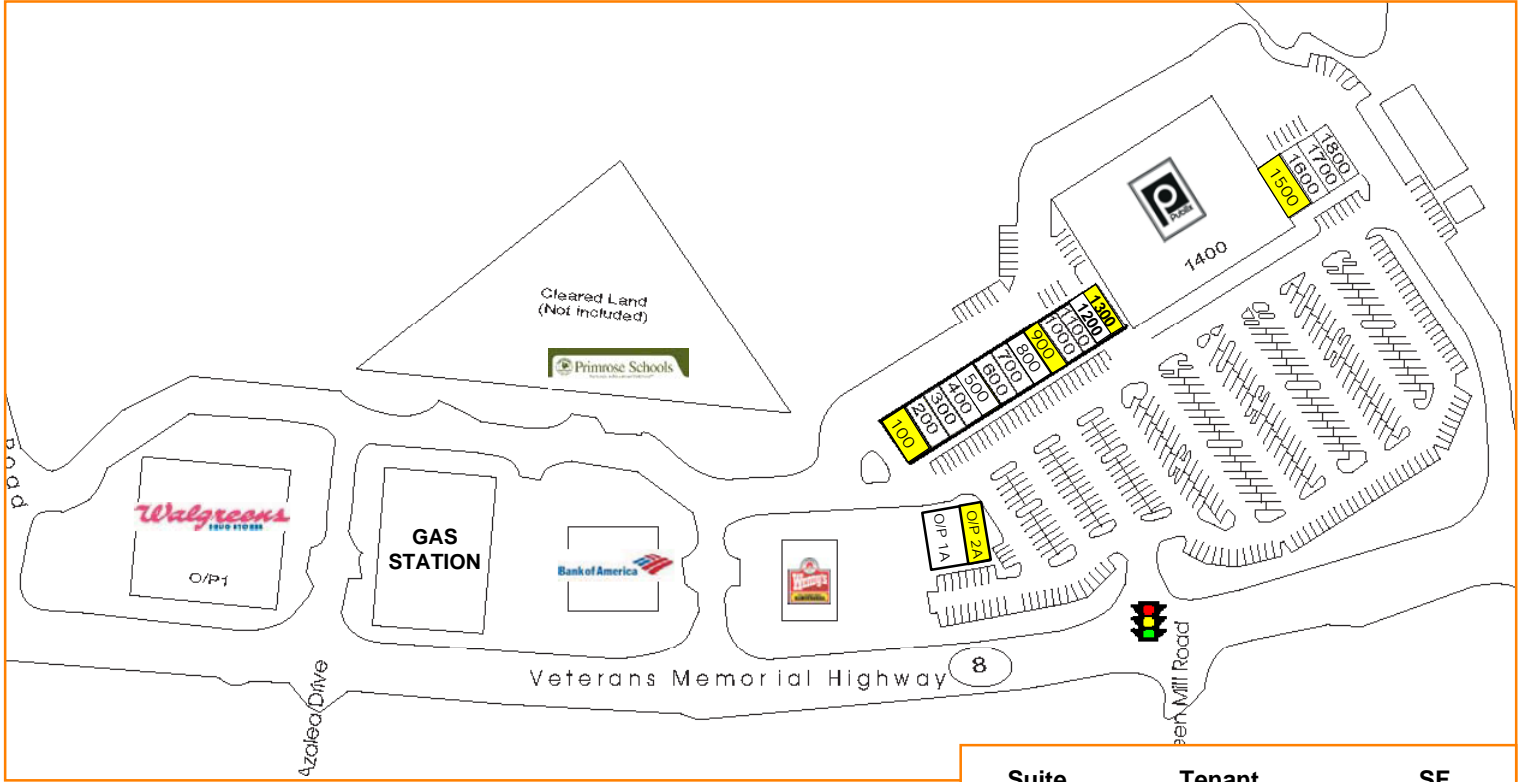
Primary **Brett Fuller**

Agent: **770-955-2434**

[brettff@theshoppingcentergroup.com](mailto:brettff@theshoppingcentergroup.com)



## Providence Pavilion



Suite	Tenant	SF
100	AVAILABLE	3,750
200	Edward Jones	1,400
300	AmeriBistro	1,400
400	MetroPCS	1,400
500	Simply Fashion	3,495
600	Chinese Restaurant	1,400
700	Subway	1,750
800	Elisabeth Ashlee	1,050
900	AVAILABLE	1,400
1000	Nail Salon	1,400
1100	Real Estate Office	1,400
1200	Total Elegance Hair	1,400
1300	AVAILABLE	1,400
1400	Publix	44,840
1500	AVAILABLE	2,100
1600	Family Dentist	1,800
1700	Ombudsman Education	2,500
1800	Pride Cleaners	1,600
O/P 1	Walgreens	14,820
O/P 1A	Nextcare	3,438
O/P 2A	AVAILABLE	1,462
	<b>TOTAL</b>	<b>95,206</b>

DEMOGRAPHICS*	1-Mile	3-Miles	5-Miles
Population	4,249	53,323	168,902
Number of Households	1,502	19,544	64,832
Avg. HH Income	\$85,482	\$67,031	\$71,101



**For More Information Call:**

**Primary Agent: Brett Fuller**  
**770-955-2434**  
**brettf@theshoppingcentergroup.com**